

CORNER LOT AT BUSY INTERSECTION I GRANITE FALLS, NC

572 S MAIN STREET GRANITE FALLS, NC 28630



SPECIFICATIONS

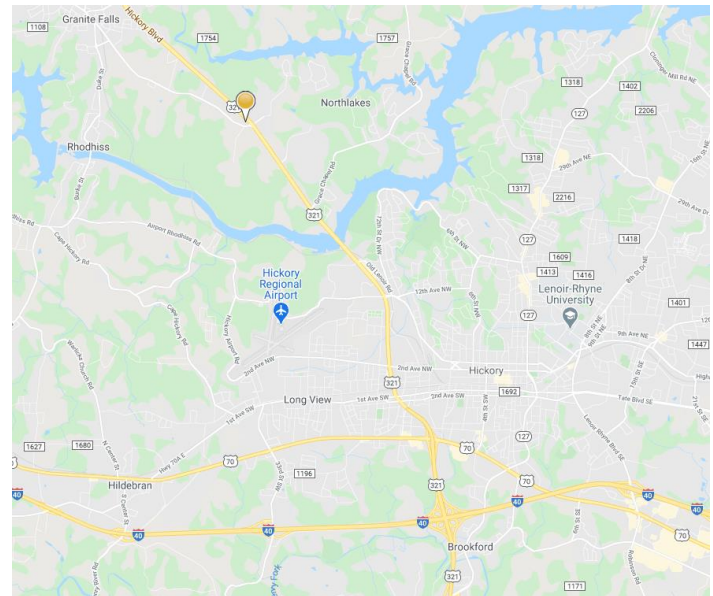
Price: \$1,800,000

Acreage: 6.705 gross acres

(3.834 net acres)* based on deed

Zoning: Commercial

Site on the corner of 321 in Granite Falls with light at Wal-Mart Super Center. Convenient to Downtown Granite Falls.



COMMERCIAL  FIRST

Commercial Real Estate | Site Selection

Jenny Eckard

828.320.8989

jenny@commercialfirst.net

3031 North Center Street

Hickory, NC 28601

www.commercialfirst.net

AERIAL

572 S MAIN STREET GRANITE FALLS, NC 28630



COMMERCIAL  FIRST

Commercial Real Estate | Site Selection

Jenny Eckard

828.320.8989

jenny@commercialfirst.net

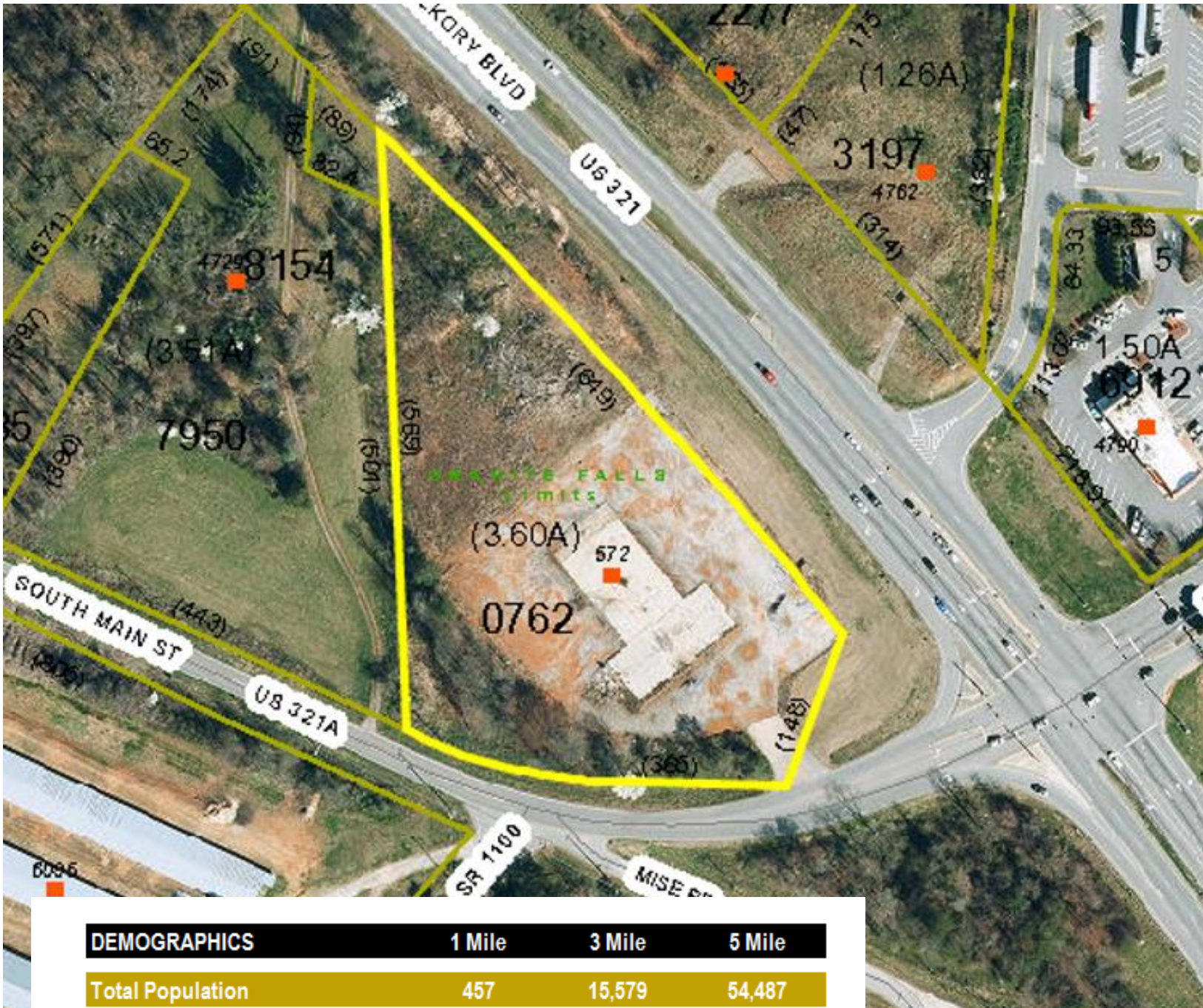
3031 North Center Street

Hickory, NC 28601

www.commercialfirst.net

SITE

572 S MAIN STREET GRANITE FALLS, NC 28630



DEMOGRAPHICS	1 Mile	3 Mile	5 Mile
Total Population	457	15,579	54,487
Total Households	188	6,414	22,860
Median Household Income	\$57,726	\$67,113	\$60,518
Total Employees	809	6,189	39,399

COMMERCIAL  FIRST

Commercial Real Estate | Site Selection

Jenny Eckard

828.320.8989

jenny@commercialfirst.net

3031 North Center Street

Hickory, NC 28601

www.commercialfirst.net