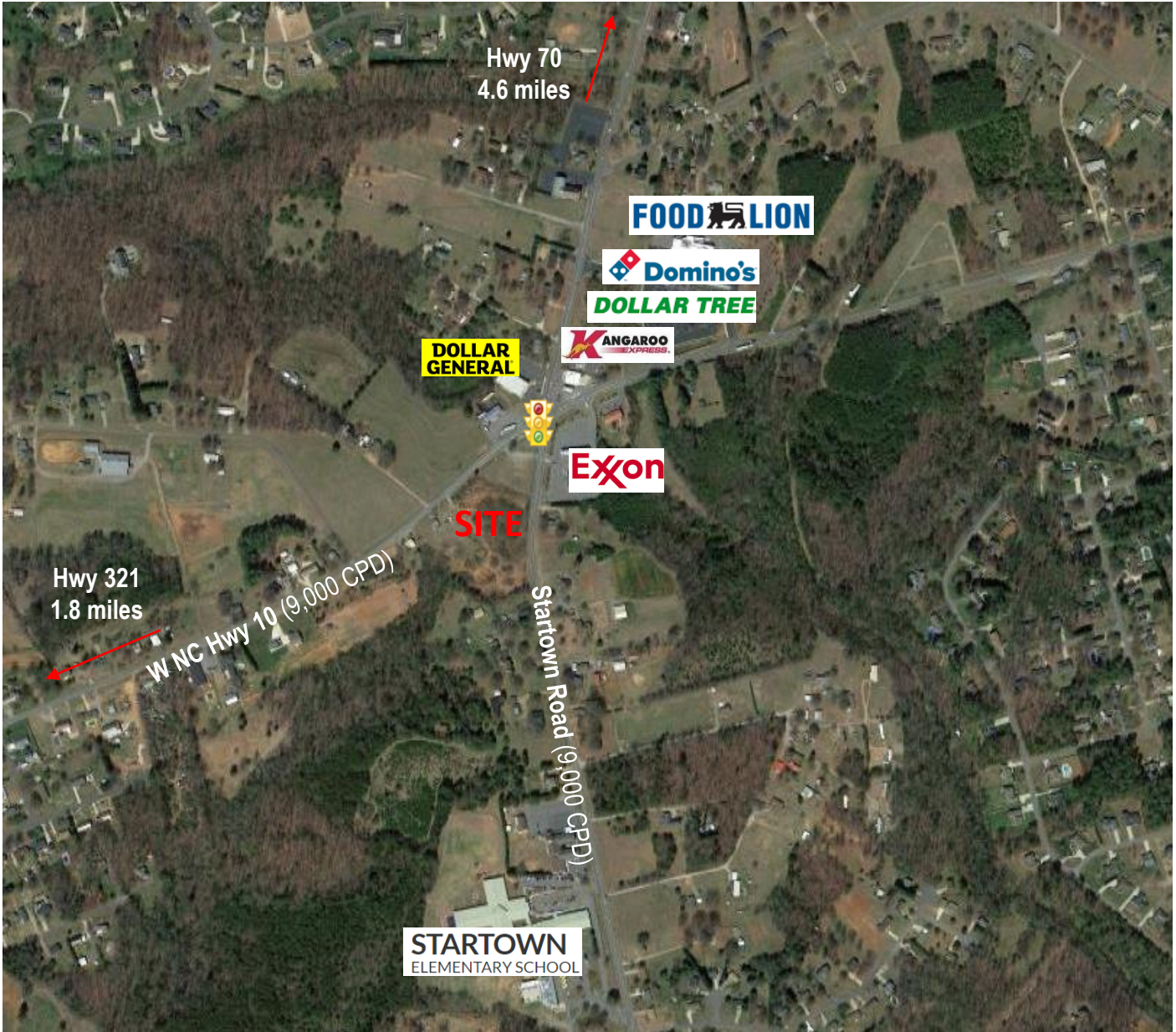


4.55 +/- ACRES | NEWTON, NC

2511 & 2495 W NC HWY 10 NEWTON, NC 28658



SPECIFICATIONS

Price: \$525,000

Acreege: 4.55 +/-

Zoning: R-20

Topography: Level

Land with frontage and access on both Hwy 10 and Startown Road. Ideal for one or two retail locations. Must be re-zoned to a commercial zoning.

Please contact City of Newton Planning Department
828-695-4305

COMMERCIAL  FIRST

Commercial Real Estate

Site Selection

Ryan Lovern

828.446.8266

ryan@commercialfirst.net

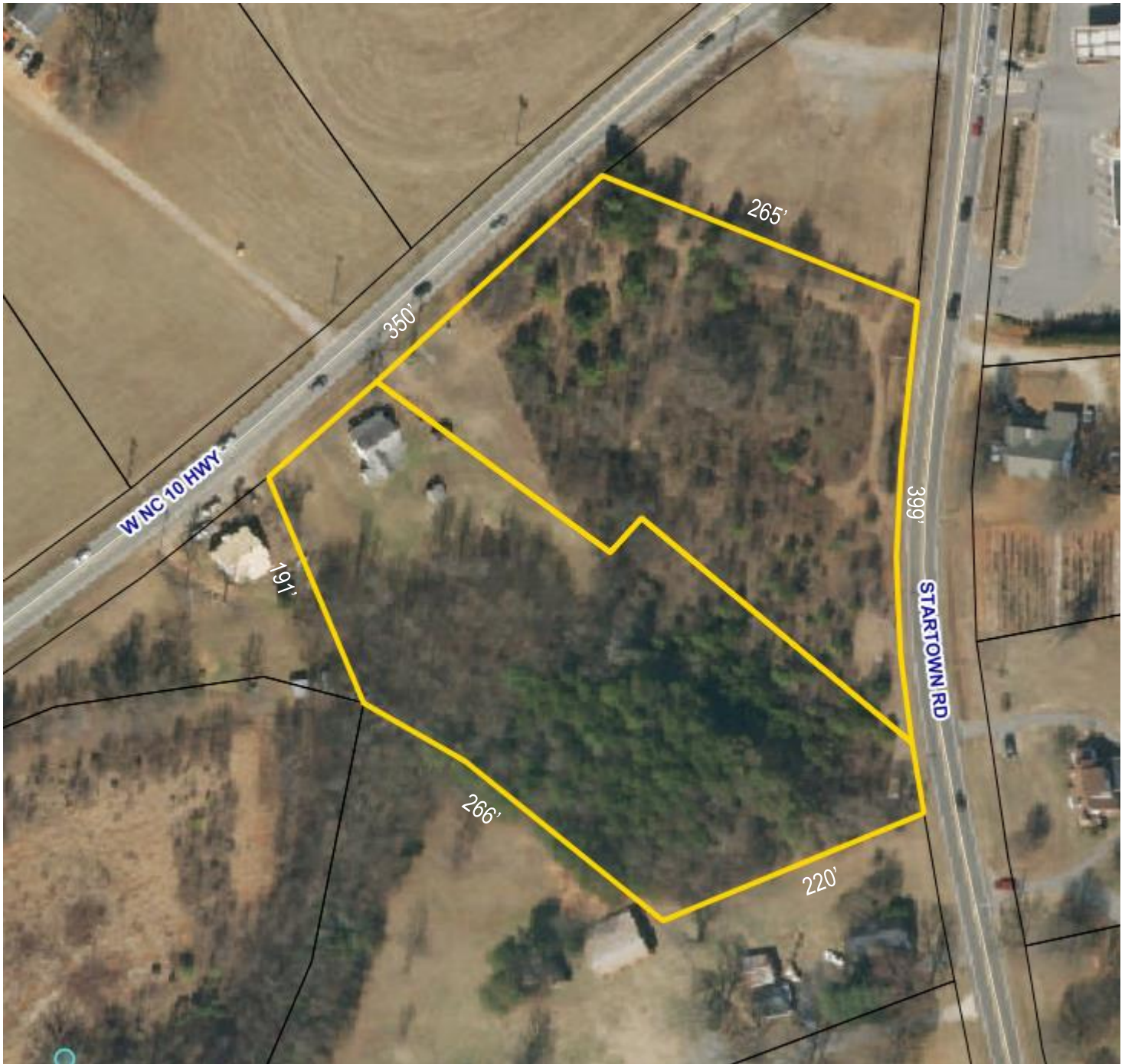
3031 North Center Street

Hickory, NC 28601

www.commercialfirst.net

SITE

2511 & 2495 W NC HWY 10 NEWTON, NC 28658



COMMERCIAL  FIRST

Commercial Real Estate | Site Selection

Ryan Lovern

828.446.8266

ryan@commercialfirst.net

3031 North Center Street

Hickory, NC 28601

www.commercialfirst.net

DEMOGRAPHICS

2511 & 2495 W NC HWY 10 NEWTON, NC 28658

	1 Miles:	3 Miles:	5 Miles:
POPULATION: 2017			
Total Population	2,241	10,884	31,075
Median Age	42.5	40.9	39.1
Employees	300	4,740	24,264
Establishments	37	390	1,521
INCOME: 2017			
Median HH Income	\$62,034	\$52,940	\$47,522
Average HH Income	\$89,434	\$68,835	\$59,887
Per Capita Income	\$33,344	\$27,440	\$23,987
HOUSEHOLDS: 2017			
Total Households	835	4,260	12,234
HOUSING: 2017			
Owner Occupied Housing Units	83.3%	68.1%	63.6%
Renter Occupied Housing Units	11.6%	26.0%	30.1%
Vacant Housing Units	5.2%	5.9%	6.3%
RACE: 2017			
White	85.0%	80.5%	77.0%
Black	5.0%	8.4%	10.3%
Asian or Pacific Islander	6.1%	4.9%	5.1%
American Indian or Alaska Native	0.2%	0.2%	0.3%
Other Races	3.7%	6.0%	7.2%
ETHNICITY: 2017			
Hispanic	4.5%	8.6%	10.5%
Non-Hispanic	95.5%	91.4%	89.5%